

FZD10 / Frizzled 10 Antibody (N-Terminus)
Rabbit Polyclonal Antibody
Catalog # ALS10767**Specification**

FZD10 / Frizzled 10 Antibody (N-Terminus) - Product Information

Application	IHC-P
Primary Accession	O9ULW2
Reactivity	Human, Monkey
Host	Rabbit
Clonality	Polyclonal
Calculated MW	65kDa KDa
Dilution	IHC-P~~N/A

FZD10 / Frizzled 10 Antibody (N-Terminus) - Additional Information**Gene ID** 11211**Other Names**

Frizzled-10, Fz-10, hFz10, FzE7, CD350, FZD10

Target/Specificity

Human FZD10 / Frizzled 10. BLAST analysis of the peptide immunogen showed no homology with other human proteins.

Reconstitution & Storage

Long term: -70°C; Short term: +4°C

Precautions

FZD10 / Frizzled 10 Antibody (N-Terminus) is for research use only and not for use in diagnostic or therapeutic procedures.

FZD10 / Frizzled 10 Antibody (N-Terminus) - Protein Information**Name** FZD10**Function**

Receptor for Wnt proteins. Functions in the canonical Wnt/beta-catenin signaling pathway (By similarity). The canonical Wnt/beta-catenin signaling pathway leads to the activation of disheveled proteins, inhibition of GSK-3 kinase, nuclear accumulation of beta-catenin and activation of Wnt target genes. A second signaling pathway involving PKC and calcium fluxes has been seen for some family members, but it is not yet clear if it represents a distinct pathway or if it can be integrated in the canonical pathway, as PKC seems to be required for Wnt-mediated inactivation of GSK-3 kinase. Both pathways seem to involve interactions with G-proteins. May be involved in transduction and intercellular transmission of polarity information during tissue morphogenesis and/or in differentiated tissues (Probable).

Cellular Location

Cell membrane; Multi-pass membrane protein

Tissue Location

Highest levels in the placenta and fetal kidney, followed by fetal lung and brain. In adult brain, abundantly expressed in the cerebellum, followed by cerebral cortex, medulla and spinal cord; very low levels in total brain, frontal lobe, temporal lobe and putamen. Weak expression detected in adult brain, heart, lung, skeletal muscle, pancreas, spleen and prostate.

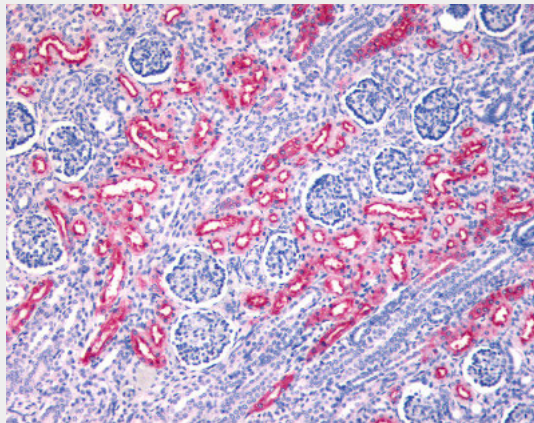
Volume

50 µl

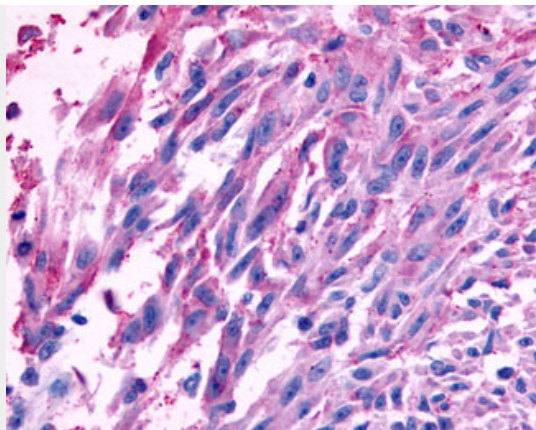
FZD10 / Frizzled 10 Antibody (N-Terminus) - Protocols

Provided below are standard protocols that you may find useful for product applications.

- [Western Blot](#)
- [Blocking Peptides](#)
- [Dot Blot](#)
- [Immunohistochemistry](#)
- [Immunofluorescence](#)
- [Immunoprecipitation](#)
- [Flow Cytometry](#)
- [Cell Culture](#)

FZD10 / Frizzled 10 Antibody (N-Terminus) - Images

Anti-FZD10 / Frizzled 10 antibody ALS10767 IHC of human kidney, fetal.



Anti-FZD10 / Frizzled 10 antibody IHC of human Skin, Melanoma.

FZD10 / Frizzled 10 Antibody (N-Terminus) - Background

Receptor for Wnt proteins. Most of frizzled receptors are coupled to the beta-catenin canonical signaling pathway, which leads to the activation of disheveled proteins, inhibition of GSK-3 kinase, nuclear accumulation of beta-catenin and activation of Wnt target genes. A second signaling pathway involving PKC and calcium fluxes has been seen for some family members, but it is not yet clear if it represents a distinct pathway or if it can be integrated in the canonical pathway, as PKC seems to be required for Wnt-mediated inactivation of GSK-3 kinase. Both pathways seem to involve interactions with G-proteins. May be involved in transduction and intercellular transmission of polarity information during tissue morphogenesis and/or in differentiated tissues.

FZD10 / Frizzled 10 Antibody (N-Terminus) - References

Koike J., et al. Biochem. Biophys. Res. Commun. 262:39-43(1999).
Tanaka S., et al. Proc. Natl. Acad. Sci. U.S.A. 95:10164-10169(1998).
Kwon H.S., et al. Mol. Cell. Biol. 29:2139-2154(2009).